



**描述:**

- 电缆密封套外壳有塑制、黄铜、黄铜镀镍、不锈钢304/316L材料，Ex e 电缆密封套所有的入口（安装端）现场加工成公制螺纹，Ex d 电缆密封套入口螺纹加工成公制螺纹或 NPT 锥度英制管螺纹。防护等级 IP66/67。
- Ex e 空塞堵头用于 Ex e 箱闲置安装孔。
- 塑制零件添入适量MD粉末，长时承压下具备优良的冷流抗性。
- Ex d 空塞堵头用于 Ex d 箱体的安装孔，Ex d箱不容易钻孔，使用空塞堵头为未来安装扩充提供方便。

- 变径件用于改变已开孔设备的缩径、扩径。
- 呼吸、排流阀是为保证壳体内外部的压力均匀，可以有效防止湿气进入壳体，也可以防止壳体内水汽凝结。
- 护套的使用有效保护延长电缆密封套使用寿命。
- IECEx 国际认证、ATEX 欧盟认证

**Descriptions:**

- Cable glands can be manufactured in plastic, brass, nickel plated brass, stainless steel 304/316L. All entries(for installation) are produced to be metric thread for Ex e cable glands, either metric thread or NPT tapered thread for Ex d cable glands. Degree of protection is IP66/67.
- Ex e stopping plugs are used for blind unused entries in Ex e boxes.
- Plastic parts with appropriate MD powder have excellent cold flow resistance under long-term pressure.
- Exd stopping plugs are used for blind unused entries in Ex d boxes which are not easy to drill entries after production. With these Ex d stopping plugs, it will be convenient for future expansion.

- Reducers are used to have smaller size or bigger size for already drilled holes.
- Breather drains are used to keep the pressure same inside or outside the enclosure. They can effectively prevent any moisture within an enclosure or avoid any moisture condensation inside the enclosure.
- Shrouds can be used on cable glands to protect these cable glands for long life.
- IECEx International certification and ATEX European Approval.

1 区和 2 区

Zone 1 and zone 2

21 区和 22 区

Zone 21 and zone 22

**主要数据 Main technical data:**

认证 Certification	防爆标志 Ex mark	符合标准 Meet the standard
<b>China: EETI18.0068X</b>	Ex e II C Gb Ex tD A21 IP66	GB3836 GB12476
<b>IECEX: 认证中 Under approval</b>	Ex eb II C Gb Ex tb III C Db	IEC60079
<b>ATEX: Sira18 ATEX3191X</b>	⊕ II 2GD Ex eb II C Gb Ex tb III C Db	EN60079

适用范围: 用于 1 区和 2 区, 21 区和 22 区

工作温度: -55℃ to +75℃

防护等级: IP66

外壳材料: 聚酰胺

符合: 2460

Intended use: Can be used in zone 1 and zone 2

Can be used in zone 21 and zone 22

Operating temperature: -55℃ to +75℃

Degree of protection: IP66


Material: polyamide

Conformity to: 2460

**B**
**CZ0220/1□ 塑制电缆密封套订购规格 Order specifications of plastic cable glands:**

图样 Illustration	编码 Code	螺纹 M Thread M	电缆直径 Cable diameter (mm)	SW (mm)	L1 (mm)	L2 (mm)	重量 Weight (kg)	件/包 Pcs/package	订购号 Order No.			
 Ex-e	A01	M16 × 1.5	Φ4-9	单孔型 Single-hole type	20	10	27	0.007	20	<b>CZ0220/12-1610-101</b>		
	A15	M16 × 1.5	Φ4-9		20	16	27	0.008	20	<b>CZ0220/12-1616-115</b>		
	A02	M20 × 1.5	Φ5.5-13		24	11	31	0.011	20	<b>CZ0220/12-2011-102</b>		
	A10	M20 × 1.5	Φ5.5-13		24	16	31	0.012	20	<b>CZ0220/12-2016-110</b>		
	A03	M25 × 1.5	Φ8-17		29	11	36	0.018	20	<b>CZ0220/12-2511-103</b>		
	A11	M25 × 1.5	Φ8-17		29	16	36	0.019	20	<b>CZ0220/12-2516-111</b>		
	A04	M32 × 1.5	Φ12-21		36	12	43	0.030	20	<b>CZ0220/12-3212-104</b>		
	A12	M32 × 1.5	Φ12-21		36	16	43	0.030	20	<b>CZ0220/12-3216-112</b>		
	A05	M40 × 1.5	Φ17-28		46	14	47	0.053	10	<b>CZ0220/12-4014-105</b>		
	A06	M50 × 1.5	Φ22-35		55	16	54	0.081	10	<b>CZ0220/12-5016-106</b>		
	A07	M63 × 1.5	Φ27-48		68	16	57	0.123	5	<b>CZ0220/12-6316-107</b>		
	A08	M25 × 1.5	4 × Φ3 ~ Φ6		多孔型 Multi-hole type	29	11	36	0.018	20	<b>CZ0220/12-2511-108</b>	
	A13	M25 × 1.5	4 × Φ3 ~ Φ6			29	16	36	0.019	20	<b>CZ0220/12-2516-113</b>	
	A09	M32 × 1.5	4 × Φ5 ~ Φ7			36	12	43	0.031	20	<b>CZ0220/12-3212-109</b>	
A14	M32 × 1.5	4 × Φ5 ~ Φ7	36	16		43	0.032	20	<b>CZ0220/12-3216-114</b>			
 单孔型 Single-hole type	B01	M16 × 1.5	Φ4-9	单孔型 Single-hole type		20	10	27	0.007	20	<b>CZ0220/13-1610-101</b>	
	B15	M16 × 1.5	Φ4-9			20	16	27	0.008	20	<b>CZ0220/13-1616-115</b>	
	B02	M20 × 1.5	Φ5.5-13		24	11	31	0.011	20	<b>CZ0220/13-2011-102</b>		
	B10	M20 × 1.5	Φ5.5-13		24	16	31	0.012	20	<b>CZ0220/13-2016-110</b>		
	B03	M25 × 1.5	Φ8-17		29	11	36	0.018	20	<b>CZ0220/13-2511-103</b>		
	B11	M25 × 1.5	Φ8-17		29	16	36	0.019	20	<b>CZ0220/13-2516-111</b>		
	B04	M32 × 1.5	Φ12-21		36	12	43	0.030	20	<b>CZ0220/13-3212-104</b>		
	B12	M32 × 1.5	Φ12-21		36	16	43	0.030	20	<b>CZ0220/13-3216-112</b>		
	B05	M40 × 1.5	Φ17-28		46	14	47	0.053	10	<b>CZ0220/13-4014-105</b>		
	B06	M50 × 1.5	Φ22-35		55	16	54	0.081	10	<b>CZ0220/13-5016-106</b>		
	B07	M63 × 1.5	Φ27-48		68	16	57	0.123	5	<b>CZ0220/13-6316-107</b>		
	 多孔型 Multi-hole type	B08	M25 × 1.5		4 × Φ3 ~ Φ6	多孔型 Multi-hole type	29	11	36	0.018	20	<b>CZ0220/13-2511-108</b>
		B13	M25 × 1.5		4 × Φ3 ~ Φ6		29	16	36	0.019	20	<b>CZ0220/13-2516-113</b>
		B09	M32 × 1.5		4 × Φ5 ~ Φ7		36	12	43	0.031	20	<b>CZ0220/13-3212-109</b>
B14		M32 × 1.5	4 × Φ5 ~ Φ7	36	16		43	0.032	20	<b>CZ0220/13-3216-114</b>		

**CZ0220/22 空塞插头订购规格 Order specifications of stopping plugs:**

图样 Illustration	用于电缆入口 For entry of cable	D1 (mm)	D2 (mm)	L (mm)	L1 (mm)	重量 Weight (kg)	件/包 Pcs/package	订购号 Order No.
	M20	Φ12	8	20	15	0.001	20	<b>CZ0220/22-4023/M20</b>
	M25	Φ16	11.5	25	18	0.003	20	<b>CZ0220/22-4023/M25</b>
	M32	Φ20	16.5	28	20	0.004	20	<b>CZ0220/22-4023/M32</b>

**CZ0220/32 塑制空塞堵头订购规格 Order specifications of plastic stopping plugs:**

图样 Illustration	编码 Code	螺纹 M Thread M	L1 (mm)	L (mm)	DΦ (mm)	重量 Weight (kg)	件/包 Pcs/package	订购号 Order No.
	H01	M16 × 1.5	14	4	22	0.003	20	<b>CZ0220/32-1614-101</b>
	H02	M20 × 1.5	15	4	26.4	0.005	20	<b>CZ0220/32-2015-102</b>
	H03	M25 × 1.5	15	4	31.9	0.008	20	<b>CZ0220/32-2515-103</b>
	H04	M32 × 1.5	16	5.5	39.6	0.013	20	<b>CZ0220/32-3216-104</b>
	H05	M40 × 1.5	16	5.5	50.6	0.019	10	<b>CZ0220/32-4016-105</b>
	H06	M50 × 1.5	16	5.5	60.5	0.026	10	<b>CZ0220/32-5016-106</b>
	H07	M63 × 1.5	19	7.5	74.8	0.048	5	<b>CZ0220/32-6319-107</b>

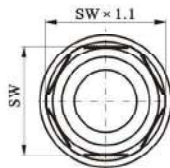
**B**
**CZ0220/42 塑制变径件订购规格 Order specifications of plastic reducer:**

图样 Illustration	螺纹 M1 Thread M1	螺纹 M2 Thread M2	L1 (mm)	L2 (mm)	SW (mm)	重量 Weight (kg)	件/包 Pcs/package	订购号 Order No.
	M20 × 1.5	M16 × 1.5	20.5	16	24	0.003	20	<b>CZ0220/42-M20-M16</b>
	M25 × 1.5	M16 × 1.5	20.5	16	29	0.008	20	<b>CZ0220/42-M25-M16</b>
	M25 × 1.5	M20 × 1.5	20.5	16	29	0.006	20	<b>CZ0220/42-M25-M20</b>
	M32 × 1.5	M20 × 1.5	20.5	16	36	0.013	10	<b>CZ0220/42-M32-M20</b>
	M32 × 1.5	M25 × 1.5	20.5	16	36	0.010	10	<b>CZ0220/42-M32-M25</b>
	M40 × 1.5	M25 × 1.5	20.5	16	46	0.021	5	<b>CZ0220/42-M40-M25</b>
	M40 × 1.5	M32 × 1.5	20.5	16	46	0.014	5	<b>CZ0220/42-M40-M32</b>
	M50 × 1.5	M25 × 1.5	21.5	16	55	0.038	5	<b>CZ0220/42-M50-M25</b>
	M50 × 1.5	M32 × 1.5	21.5	16	55	0.032	5	<b>CZ0220/42-M50-M32</b>
	M50 × 1.5	M40 × 1.5	21.5	16	55	0.024	5	<b>CZ0220/42-M50-M40</b>
	M63 × 1.5	M25 × 1.5	21.5	16	68	0.057	5	<b>CZ0220/42-M63-M25</b>
	M63 × 1.5	M40 × 1.5	21.5	16	68	0.048	5	<b>CZ0220/42-M63-M40</b>
	M63 × 1.5	M50 × 1.5	21.5	16	68	0.036	5	<b>CZ0220/42-M63-M50</b>

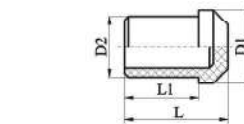
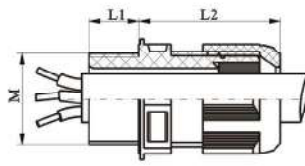
**附件 Accessories:**

4024 专用扳手 Special spanner

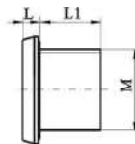
图样 Illustration	规格 Specifications	扳手宽度 Width of spanner	件/包 Pcs/package	订购号 Order No.
	M16	20	10	<b>4024 / 20</b>
	M20	24	10	<b>4024 / 24</b>
	M25	29	10	<b>4024 / 29</b>
	M32	36	10	<b>4024 / 36</b>
	M40	46	5	<b>4024 / 46</b>
	M50	55	5	<b>4024 / 55</b>

**外形尺寸 Outline dimensions:**


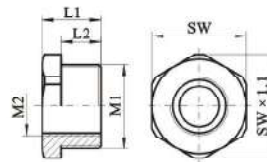
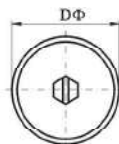
CZ0220/1□ 塑制电缆密封套 Plastic cable glands



CZ0220/22 空塞插头 Stopping plugs



CZ0220/32 塑制空塞堵头 Plastic stopping plugs



CZ0220/42 塑制变径件 Plastic reducer