

REVISION RECORD				
REV	ECN	DESCRIPTION	DRFT	DATE

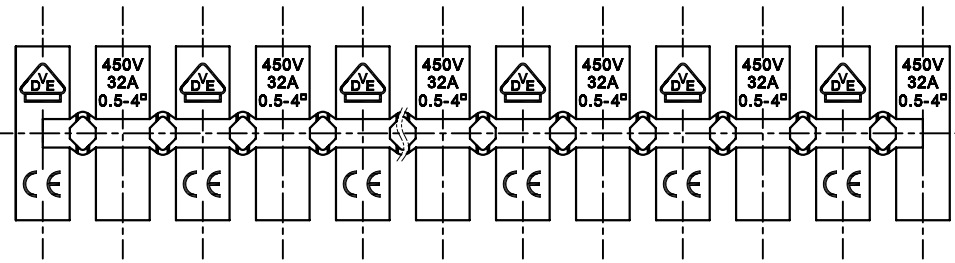
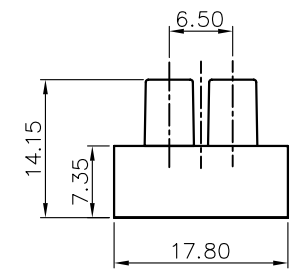
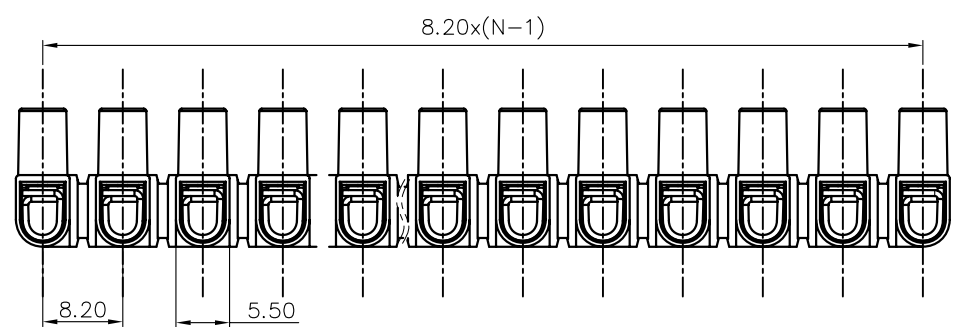
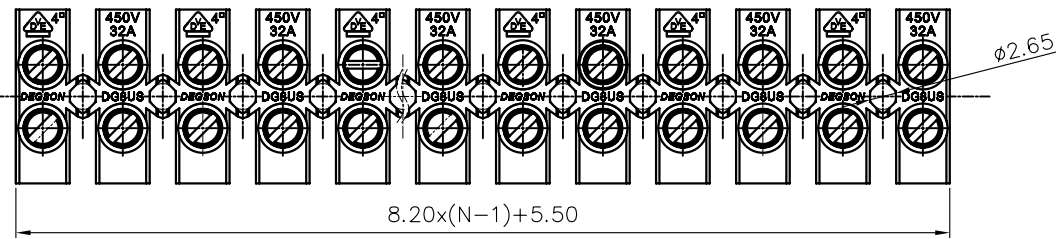
NOTES1:
 UL Standard
 1.Rated Voltage/Current : 300V / 15A
 2.Torque Value : M2.5 , 3.54Lb.in
 3.Wire Range : 20~14AWG
 IEC Standard
 1.Rated Voltage/Current : 450V / 32A
 2.Torque Value : M2.5 , 0.4N·m
 3.Wire Range : 0.5~4.0mm²

NOTES2:
 1.Dimension shall be interpreted per ASME Y14.5-2009
 2.Pitch : 8.20mm, Poles : N=02~12P
 3.Stripping length : 8mm
 4.Withstanding Voltage : AC2500V/1Min.
 5.Operating temperature: -5°C~+80°C
 6.Undimensioned Tolerances:

Pitch range in mm	Nominal dimension range in mm						0.1/10	
	Over 6 TO 6	Over 10 TO 10	Over 10 TO 24	Over 30 TO 30	Over 60 TO 60	Over 100 TO 150		
±0.15	±0.20	±0.30	±0.30	±0.50	±0.70	±1.00	±1.30	±2*

7.RoHS Compliance

DG8US - XXP - 1Y - 300A (H)
 (Series No.) (Poles) (Single Pitch) (Color):1.(Grey)
 2.(Blue)
 3.(Black)
 4.(Green)
 5.(Orange)
 6.(Red)
 7.(Transparent)
 8.(Yellow)
 9.(White)



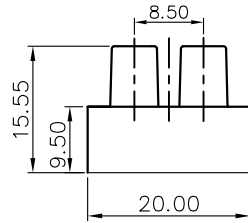
DETACHED LISTS	PART NO.:	/			
	APPD:	/			
	CHKD:	/			
	DRFT:	/			
	THIRD ANGLE PROJECTION		DRAWING NO.:		/
		NAME:		宁波高松电子有限公司 NINGBO DEGSON ELECTRICAL CO., LTD	
		NAME:			DG8US-XXP-1Y-300A(H)
		TITLE:	CUSTOMER DRAWING	REV	D0
		DRAWING NO.:		SHEET	1/1
		MM (INCH)		SCALE	1:1
		DO NOT SCALE DRAWING			

REVISION RECORD				
REV	ECN	DESCRIPTION	DRFT	DATE

- NOTES1:
- UL Standard
- 1.Rated Voltage/Current : 300V / 20A
 - 2.Torque Value : M3 , 7.02Lb.in
 - 3.Wire Range : 18~12AWG
- IEC Standard
- 1.Rated Voltage/Current : 450V / 41A
 - 2.Torque Value : M3 , 0.8N·m
 - 3.Wire Range : 0.75~6.0mm²

- NOTES2:
- 1.Dimension shall be interpreted per ASME Y14.5-2009
 - 2.Pitch : 10.00mm, Poles : N=02~12P
 - 3.Stripping length : 8mm
 - 4.Withstanding Voltage : AC2500V/1Min.
 - 5.Operating temperature: -5°C~+80°C
 - 6.Undimensioned Tolerances:

Pitch range in mm		Nominal dimension range in mm				0.1/10	
Over 6 TO 10	Over 10 TO 24	Over 30 TO 60	Over 60 TO 100	Over 100 TO 150	Over 150		
±0.15	±0.20	±0.30	±0.30	±0.50	±0.70	±1.00	±1.30
						±2°	

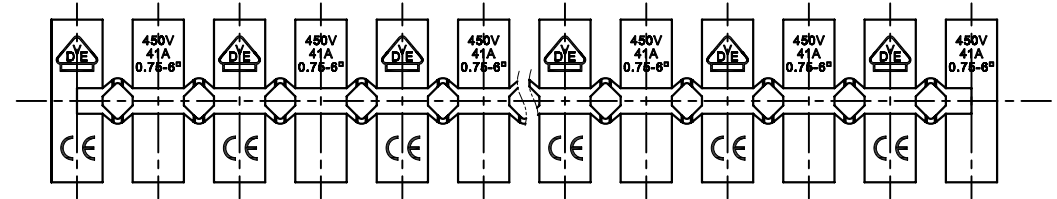
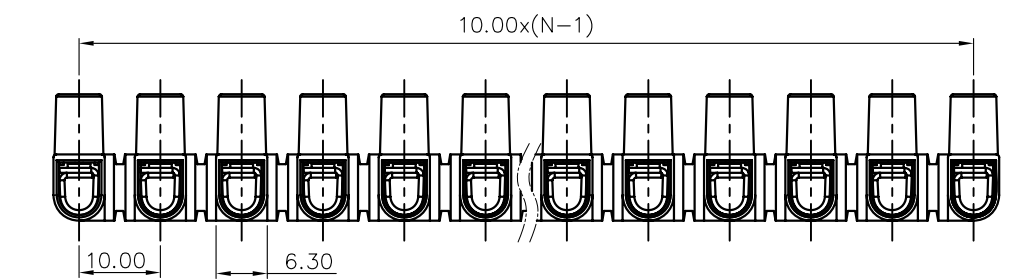
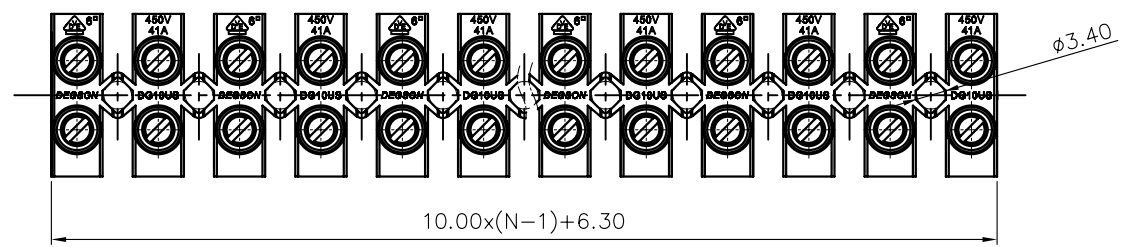


7.RoHS Compliance

DG10US - XXP - 1Y - 300A (H)

(Series No.) (Poles) (Single Pitch) (Color):1.(Grey)
 2.(Blue)
 3.(Black)
 4.(Green)
 5.(Orange)
 6.(Red)
 7.(Transparent)
 8.(Yellow)
 9.(White)

(RoHS)
 300A-(Cstomer Request)



DETACHED LISTS	PART NO.:	/			
	APPD:	/			
	CHKD:	/			
	DRFT:	/			
	<p>THIRD ANGLE PROJECTION</p>		<p>DO NOT SCALE DRAWING</p>		<p>SCALE: 1:1</p>
<p>NINGBO DEGSON ELECTRICAL CO., LTD</p>		<p>NAME: DG10US-XXP-1Y-300A(H)</p>		<p>REV: /</p>	
<p>TITLE: CUSTOMER DRAWING</p>		<p>DRIVING NO.: /</p>		<p>DO: /</p>	
<p>SHEET: /</p>		<p>MM (INCH)</p>		<p>SCALE: 1:1</p>	

REVISION RECORD				
REV	ECN	DESCRIPTION	DRFT	DATE

- NOTES1:
- UL Standard
- 1.Rated Voltage/Current : 600V / 30A
 - 2.Torque Value : M3.5 , 7.02Lb.in
 - 3.Wire Range : 12~8AWG
- IEC Standard
- 1.Rated Voltage/Current : 450V / 57A
 - 2.Torque Value : M3.5 , 0.8N·m
 - 3.Wire Range : 1.5~10mm²

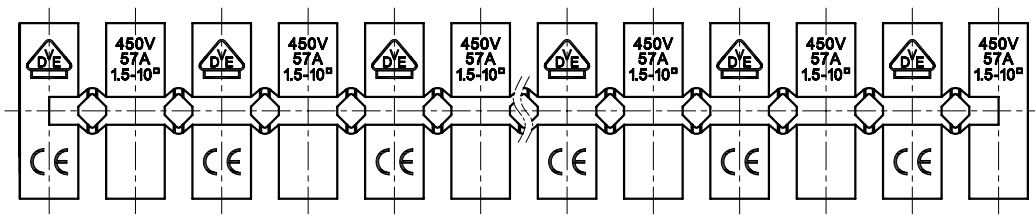
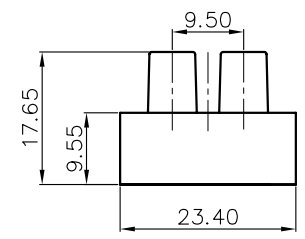
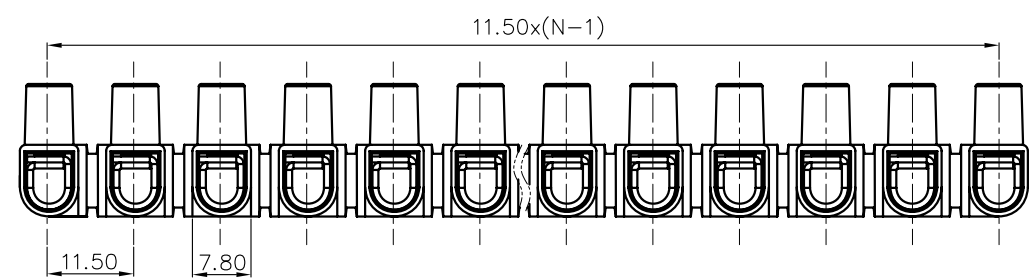
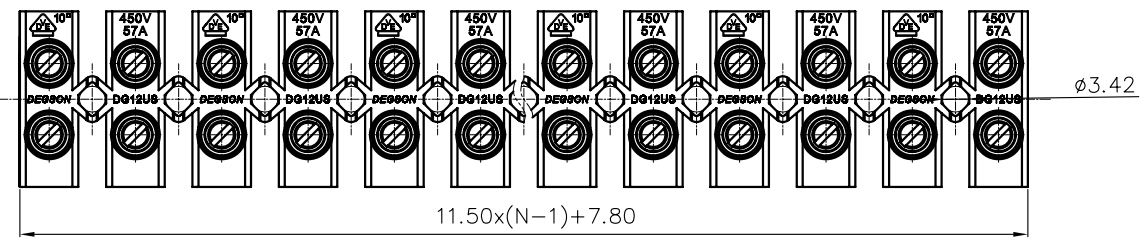
- NOTES2:
- 1.Dimension shall be interpreted per ASME Y14.5-2009
 - 2.Pitch : 11.50mm, Poles : N=02~12P
 - 3.Stripping length : 8mm
 - 4.Withstanding Voltage : AC2500V/1Min.
 - 5.Operating temperature: -5°C~+80°C
 - 6.Undimensioned Tolerances:

Pitch range in mm		Nominal dimension range in mm				0.1/10	
TO	6	TO	30	TO	60	TO	150
6	10	24	30	60	100	150	150
±0.15	±0.20	±0.30	±0.30	±0.50	±0.70	±1.00	±1.30
							±2°

7.RoHS Compliance

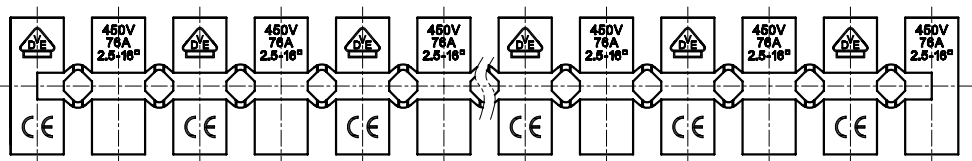
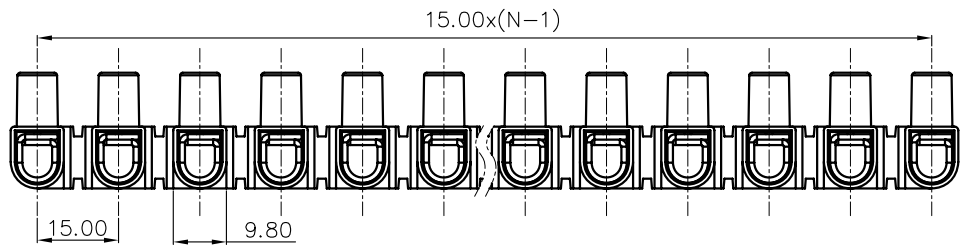
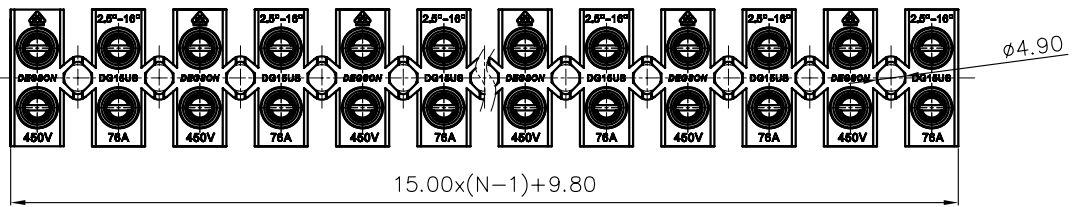
DG12US-1.2 - XXP - 1Y - 300A (H)

(Series No.) (Poles) (Single Pitch) (Color):1.(Grey)
 2.(Blue)
 3.(Black)
 4.(Green)
 5.(Orange)
 6.(Red)
 7.(Transparent)
 8.(Yellow)
 9.(White)



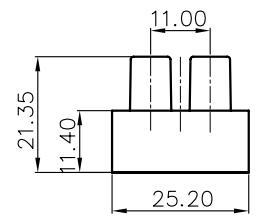
DETACHED LISTS	PART NO.:	/			
	APPD:	/			
	CHKD:	/			
	DRFT:	/			
		<p>THIRD ANGLE PROJECTION</p>		<p>DO NOT SCALE DRAWING</p>	
		DRAWING NO.:		/	
		MM (INCH)		SCALE	
		TITLE: CUSTOMER DRAWING		REV	DO
		NAME: DG12US-1.2-XXP-1Y-300A(H)		SHEET	1/1
		NINGBO DEGSON ELECTRICAL CO., LTD		SCALE	1:1

REVISION RECORD				
REV	ECN	DESCRIPTION	DRFT	DATE



NOTES1:
 UL Standard
 1.Rated Voltage/Current : 600V / 50A
 2.Torque Value : M4 , 10.53Lb.in
 3.Wire Range : 14~6AWG
 IEC Standard
 1.Rated Voltage/Current : 450V / 76A
 2.Torque Value : M4 , 1.2N.m
 3.Wire Range : 2.5~16mm²

NOTES2:
 1.Dimension shall be interpreted per ASME Y14.5-2009
 2.Pitch : 15.00mm, Poles : N=02~12P
 3.Stripping length : 8mm
 4.Withstanding Voltage : AC3000V/1Min.
 5.Operating temperature: -5°C~+80°C
 6.Undimensioned Tolerances:



Pitch range in mm	Nominal dimension range in mm						0.1/10
	Over 6 TO 6	Over 10 TO 10	Over 15 TO 15	Over 30 TO 30	Over 60 TO 60	Over 100 TO 100	
±0.15	±0.20	±0.30	±0.30	±0.50	±0.70	±1.00	±2*

7.RoHS Compliance

DG15US-1.2 - XXP - 1Y - 300A (H)
 (Series No.) (Poles) (Single Pitch) (Color): 1.(Grey)
 2.(Blue)
 3.(Black)
 4.(Green)
 5.(Orange)
 6.(Red)
 7.(Transparent)
 8.(Yellow)
 9.(White)

DETACHED LISTS	PART NO.:	/			
	APPD:	/			
	CHKD:	/			
	DRFT:	/			
	THIRD ANGLE PROJECTION		DRAWING NO.:		/
		MM (INCH)		DO NOT SCALE DRAWING	
		TITLE: CUSTOMER DRAWING		REV: /	
		NAME: DG15US-1.2-XXP-1Y-300A(H)		DO: /	
		NINGBO DEGSON ELECTRICAL CO., LTD		SHEET: 1/1	
		SCALE: 1:1			