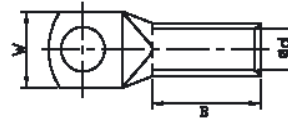
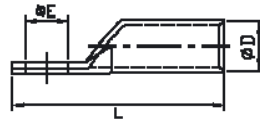


**TL WITH LONG BARREL COPPER TUBE TERMINALS TL 铜管端子**



- ⊙Material
- ⊙Terminal Body: Copper
- ⊙Plating: Tin

PART NO	ITEM NO	DIMENSIONS					
		φE	φD	φd	W	B	L
LY0001-3001	TL10-6	6.4	6.9	4.7	11.9	19.0	35.0
LY0001-3002	TL10-8	8.3	6.9	4.7	13.5	19.0	38.0
LY0001-3003	TL16-6	6.4	7.8	5.6	11.9	23.0	39.0
LY0001-3004	TL16-8	8.3	7.8	5.6	13.6	23.0	42.0
LY0001-3005	TL25-8	8.3	9.5	7.1	14.0	29.0	50.0
LY0001-3006	TL25-10	10.5	9.5	7.1	16.0	29.0	53.0
LY0001-3007	TL35-8	8.3	11.0	8.2	16.5	30.0	54.0
LY0001-3008	TL35-10	10.5	11.0	8.2	16.5	30.0	58.0
LY0001-3009	TL50-10	10.5	12.5	9.5	18.0	35.0	64.0
LY0001-3010	TL50-12	13.0	12.5	9.5	18.0	35.0	64.0
LY0001-3011	TL70-10	10.5	15.0	11.5	21.5	38.0	70.0
LY0001-3012	TL70-12	13.0	15.0	11.5	21.5	38.0	70.0
LY0001-3013	TL95-14	14.5	17.0	13.5	25.0	43.0	88.0
LY0001-3014	TL95-16	16.5	17.0	13.5	25.0	43.0	88.0
LY0001-3015	TL120-14	14.5	20.0	15.6	29.0	49.0	94.0
LY0001-3016	TL120-16	16.5	20.0	15.6	29.0	49.0	94.0
LY0001-3017	TL150-14	14.5	21.0	16.5	30.6	56.0	102.0
LY0001-3018	TL150-16	16.5	21.0	16.5	30.6	56.0	102.0
LY0001-3019	TL185-14	14.5	23.6	18.4	34.0	63.0	113.0
LY0001-3020	TL185-16	16.5	23.6	18.4	34.0	63.0	113.0
LY0001-3021	TL240-14	14.5	26.4	21.2	38.5	66.0	119.0
LY0001-3022	TL240-16	16.5	26.4	21.2	38.5	66.0	119.0
LY0001-3023	TL300-14	14.5	28.6	23.4	42.0	77.0	133.0
LY0001-3024	TL400-16	16.5	32.8	26.8	48.0	71.7	140.0

PART NO	ITEM NO	DIMENSIONS					
		φE	φD	φd	W	B	L
LY0001-3025	S-TL-10/6	6.4	6.8	4.7	11.9	18.0	35.0
LY0001-3026	S-TL-10/8	8.3	6.8	4.7	15.0	18.0	38.0
LY0001-3027	S-TL-16/6	6.4	7.8	5.6	11.9	21.5	39.0
LY0001-3028	S-TL-16/8	8.3	7.8	5.6	15.0	21.5	41.5
LY0001-3029	S-TL-25/8	8.3	9.4	7.1	15.0	29.0	50.0
LY0001-3030	S-TL-25/10	10.5	9.4	7.1	18.0	29.0	55.0
LY0001-3031	S-TL-35/8	8.3	11.3	8.7	16.5	31.0	53.0
LY0001-3032	S-TL-35/10	10.5	11.3	8.7	19.0	31.0	57.0
LY0001-3033	S-TL-50/10	10.5	12.6	9.8	20.0	35.0	63.0
LY0001-3034	S-TL-50/12	13.0	12.6	9.8	21.0	35.0	67.0
LY0001-3035	S-TL-70/10	10.5	14.7	11.5	21.5	39.0	69.0
LY0001-3036	S-TL-70/12	13.2	14.7	11.5	21.5	39.0	71.0
LY0001-3037	S-TL-95/12	13.0	16.9	13.5	24.7	46.0	79.0
LY0001-3038	S-TL-95/14	14.5	16.9	13.5	24.7	46.0	83.0
LY0001-3039	S-TL-95/16	16.5	16.9	13.5	27.0	46.0	86.0
LY0001-3040	S-TL-120/12	13.0	19.9	15.6	28.9	51.0	87.0
LY0001-3041	S-TL-120/14	14.5	19.9	15.6	28.9	51.0	91.0
LY0001-3042	S-TL-120/16	16.5	19.9	15.6	28.9	52.0	95.0
LY0001-3043	S-TL-150/12	13.0	20.9	16.5	30.4	56.0	99.0
LY0001-3044	S-TL-150/14	14.5	20.9	16.5	30.4	56.0	103.0
LY0001-3045	S-TL-150/16	16.5	20.9	16.5	30.4	56.0	103.0
LY0001-3046	S-TL-185/12	13.0	23.7	18.8	34.0	62.0	108.0
LY0001-3047	S-TL-185/14	14.5	23.7	18.8	34.0	62.0	112.0
LY0001-3048	S-TL-185/16	16.5	23.7	18.8	34.0	62.0	113.0
LY0001-3049	S-TL-240/12	13.0	26.2	21.2	38.4	66.0	114.0
LY0001-3050	S-TL-240/14	14.5	26.2	21.2	38.4	66.0	118.0
LY0001-3051	S-TL-240/16	16.5	26.2	21.2	38.4	66.0	119.0
LY0001-3052	S-TL-300/14	14.5	28.6	23.4	41.7	75.0	132.0
LY0001-3053	S-TL-300/16	16.5	28.6	23.4	41.7	75.0	132.0
LY0001-3054	S-TL-400/16	16.5	32.8	26.8	47.8	79.0	140.0
LY0001-3055	S-TL-500/16	16.5	38.4	29.8	54.8	78.0	143.0