

# Condulet® Single Gang Device Boxes - Cast Iron or Aluminum

With and Without Mounting Lugs for Threaded Rigid and IMC Conduit

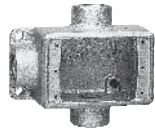
Accessories  
see pages 37-45

2F

## FS & FD



Size	Cat. #	Cat. #
1/2	FSCT1	FDCT1
3/4	FSCT2*	FDCT2*
1	FSCT3	FDCT3



Size	Cat. #	Cat. #
1/2	FST1*	FDT1
3/4	FST2*	FDT2
1		FDT3



Size	Cat. #	Cat. #
1/2	FSX1	FDX1
3/4	FSX2	FDX2
1		FDX3



Size	Cat. #†
1/2	FSCD1
3/4	FSCD2

\*Available in copper-free aluminum; add suffix "SA".  
†6 Hubs - all 1/2" pipe tap.  
† Not available with mounting lugs.

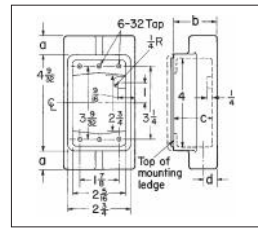
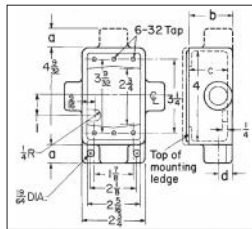
## FSY



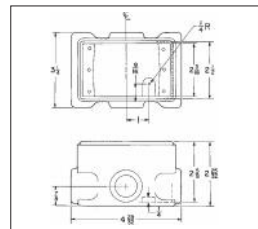
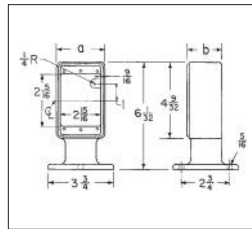
Description	Hub Size	Cat. # ‡
Single face	1	FSY311
Double face	1	FSY312

## Dimensions

In Inches:



FSCT, FSX, FST, FSCD



FSY

FDXC

## FSCT, FSX, FST, FSCD

Series	Hub Size	a	b	c	d
FS	1/2	1/4	1 1/4	1 11/16	3/4
	3/4	1/4	1 1/4	1 11/16	3/4
	1	1	1 1/4	1 11/16	3/4

## FSY

Description	Hub Size	a	b
Single gang, single face	1	2 1/4	1 11/16
Single gang, double face	1	2 1/4	3 1/4