

# NMX5

HOT SALES



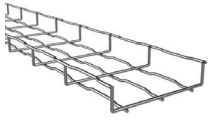
**50**  
1968-2018  
YEARS/ANOS

**BE Basor**  
CABLE TRAY SPECIALIST

**BFR H35**



DESCRIPCIÓN	EZ	GC
BFR H35 EZ-GC	REF.	REF.
BFR 60X35	2/6407	2/8230
BFR 100X35	2/3616	2/0286
BFR 150X35	2/3617	2/0287
BFR 200X35	2/3618	2/0288
BFR 300X35	2/3619	2/0289



DESCRIPCIÓN	i304	i316
BFR H35 i304-i316	REF.	REF.
BF 60X35	2/6516	2/8233
BFR 100X35	2/0303	2/7415
BFR 150X35	2/0304	2/7416
BFR 200X35	2/0305	2/7417
BFR 300X35	2/0306	2/7418



**BFR H65/105**



BFR 60x65

DESCRIPCIÓN	GC
BFR H65 GC	REF.
BFR 60X65	2/15576
BFR 100X65	2/0291
BFR 150X65	2/0292
BFR 200X65	2/0293
BFR 300X65	2/0294
BFR 400X65	2/0295
BFR 500X65	2/0296
BFR 600X65	2/0297



BFR 60x65

DESCRIPCIÓN	i304	i316
BFR H65 i304-i316	REF.	REF.
BFR 60X65	2/0307	2/7419
BFR 100X65	2/0308	2/7420
BFR 150X65	2/0309	2/7421
BFR 200X65	2/0310	2/7422
BFR 300X65	2/0311	2/7423
BFR 400X65	2/0312	2/7424
BFR 500X65	2/0313	2/7425
BFR 600X65	2/0314	2/7426



DESCRIPCIÓN	i304	i316
BFR H105 i304-i316	REF.	REF.
BFR 200X105	2/0315	2/7427
BFR 300X105	2/0316	2/7428
BFR 400X105	2/0317	2/7429
BFR 500X105	2/0318	2/7430
BFR 600X105	2/0319	2/7431

**BF2R H65/105**



BF2R 60x65

DESCRIPCIÓN	EZ	EZ 1000
BF2R H65 EZ-EZ1000	REF.	REF.
BF2R 60X65	2/7389	2/17354
BF2R 100X65	2/7248	2/17355
BF2R 150X65	2/7249	2/17356
BF2R 200X65	2/7250	2/17357
BF2R 300X65	2/7251	2/17358
BF2R 400X65	2/7394	2/17359
BF2R 500X65	2/7395	2/17361
BF2R 600X65	2/7396	2/17362



**E-BFR 105**



DESCRIPCIÓN	GC
E-BFR H105 GC	REF.
E-BFR 200X105	2/7333
E-BFR 300X105	2/7334
E-BFR 400X105	2/7335
E-BFR 500X105	2/7336
E-BFR 600X105	2/7337

**DESCRIPCIÓN**

**EZ**

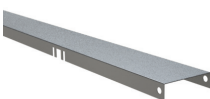
**BF2R-P H105 EZ**

**REF.**

BF2R-P 100X105	2/18693
BF2R-P 200X105	2/18695
BF2R-P 300X105	2/18696
BF2R-P 400X105	2/18697
BF2R-P 500X105	2/18699
BF2R-P 600X105	2/18700

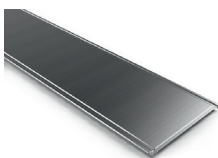


**TAPAS BFR35, BF2R65, BF2R-P105**

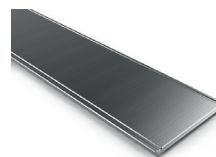


DESCRIPCIÓN	PG	GC	i304
TBF	REF.	REF.	REF.
TBF 60 1,5M	2/6044	2/3614	2/5594

DESCRIPCIÓN	PG	GC	i304	i316
TERE	REF.	REF.	REF.	REF.
TERE 100	2/1312	2/1321	2/4560	2/18154
TERE 150	2/1313	2/1322	2/5123	2/18155
TERE 200	2/1314	2/1323	2/4561	2/18156
TERE 300	2/1316	2/1325	2/4716	2/18157
TERE 400 2M	2/1317	2/1326	-	-
TERE 500 2M	2/1318	2/1327	-	-
TERE 600 2M	2/1319	2/1328	-	-
TERE 400 3M	-	-	2/4931	2/18158
TERE 500 3M	-	-	2/4562	2/18159
TERE 600 3M	-	-	2/5357	2/18160

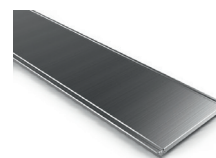


**TAPAS BFR65, BFR105**



DESCRIPCIÓN	PG	GC	i304	i316
TERE	REF.	REF.	REF.	REF.
TERE 100	2/1312	2/1321	2/4560	2/18154
TERE 150	2/1313	2/1322	2/5123	2/18155
TERE 200	2/1314	2/1323	2/4561	2/18156
TERE 300	2/1316	2/1325	2/4716	2/18157
TERE 400 2M	2/1317	2/1326	-	-
TERE 500 2M	2/1318	2/1327	-	-
TERE 600 2M	2/1319	2/1328	-	-
TERE 400 3M	-	-	2/4931	2/18158
TERE 500 3M	-	-	2/4562	2/18159
TERE 600 3M	-	-	2/5357	2/18160

**TAPA E-BFR 105**



DESCRIPCIÓN	GC
TEBFR (E-BFR H100)	REF.
TEBFR 100	2/9886
TEBFR 150	2/9887
TEBFR 200	2/9888
TEBFR 300	2/9889
TEBFR 400	2/9890
TEBFR 500	2/9891
TEBFR 600	2/9892

**DESCRIPCIÓN**

**PG**

**i304**

**i316**

**PTBFR**

**REF.**

**REF.**

**REF.**

**PTBFR**

2/10253

2/10254

2/18554







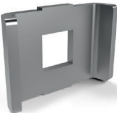
DESCRIPCIÓN	EZ	GC	i304	i316
URBF	REF.	REF.	REF.	REF.
URBF 65/105	2/6217	2/6219		
URBF 35	2/7271	2/7272		



DESCRIPCIÓN	EZ	GC	i304	i316
CGBF	REF.	REF.	REF.	REF.
CGBF	2/4364	2/4360	2/4915	2/5358



DESCRIPCIÓN	EZ	GC	i304	i316
CTBF	REF.	REF.	REF.	REF.
CTBF	2/4362	2/7132	2/4923	2/8229



DESCRIPCIÓN	EZ	GC	i304	i316
GBF	REF.	REF.	REF.	REF.
GBF	2/0337	2/0339	2/0340	2/1104



DESCRIPCIÓN	EZ	GC	i304	
UCBF	REF.	REF.	REF.	
UCBF	2/5059	2/5060	2/5093	



DESCRIPCIÓN	PG	i304	
JUBFR-A	REF.	REF.	
JUBFR-A 65/105	2/9868	2/9869	



DESCRIPTION	PG	GC	
BJC	REF.	REF.	
BJC	2/6451	2/6452	



DESCRIPCIÓN	PG	
BJCM	REF.	
BJCM	2/9807	



DESCRIPCIÓN	PG	i304	i316
MU	REF.	REF.	REF.
MU 500	2/0357	2/9872	2/14244
MU 275	2/10007		



DESCRIPCIÓN	EZ	GC	i304	i316
SSC	REF.	REF.	REF.	REF.
SSC	2/2064	2/0363	2/0373	2/18553



DESCRIPCIÓN	PG	
SSP BFR	REF.	
SSP BFR	9/02782	



DESCRIPCIÓN	PG	GC	i304	i316
SLS	REF.	REF.	REF.	REF.
SLS	2/0360	2/0370	2/0380	2/18561



DESCRIPCIÓN	PG	
SST	REF.	
SST	2/5724	



DESCRIPCIÓN	PG	GC	
STBF	REF.	REF.	
STBF 100X35	2/9675	2/9857	
STBF 60X65	2/17314		
STBF 100X65	2/0886		



DESCRIPCIÓN	PG	GC	i304	i316
STB2	REF.	REF.	REF.	REF.
STB2 12-32	2/18798	2/18799	2/18800	2/18801

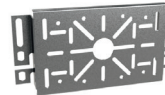


DESCRIPCIÓN	PG	
STBU	REF.	
STBU	2/5834	

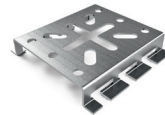


TDC

DESCRIPCIÓN	
TDC	2/5066
BPZ 400 ml.	2/7224



DESCRIPCIÓN	PG	GC	i304	i316
SUC	REF.	REF.	REF.	REF.
SUC	2/0358	2/0368	2/0378	2/18563



DESCRIPCIÓN	PG	GC	i304	i316
SUCM	REF.	REF.	REF.	REF.
SUCM	2/0359	2/0359	2/0379	2/18564



DESCRIPCIÓN	PG	GC	i304	i316
PBF	REF.	REF.	REF.	REF.
PBF	2/5590	2/4397	2/8777	2/18565



DESCRIPCIÓN	PG	GC
C-SVO	REF.	REF.
SOPORTE C-SVO 100	2/3630	2/6280
SOPORTE C-SVO 150	2/1073	2/1078
SOPORTE C-SVO 200	2/1074	2/1079
SOPORTE C-SVO 300	2/1076	2/1081
SOPORTE C-SVO 400	2/3629	2/5719
SOPORTE C-SVO 500	2/1077	2/1082
SOPORTE C-SVO 600	2/5941	2/5720
PERFIL SVO 3000	2/1101	2/7436



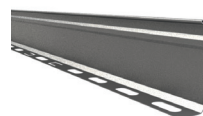
DESCRIPCIÓN	PG	GC
C-SHO	REF.	REF.
SOP. C-SHO 100	2/7230	2/7239
SOP. C-SHO 150	2/7231	2/7240
SOP. C-SHO 200	2/7232	2/7241
SOP. C-SHO 300	2/7233	2/7242
PZ. SOP. SHO/SHOT	2/6240	2/6318



DESCRIPCIÓN	GC	i304
C-SHO	REF.	REF.
SOP. SP 100	2/6495	2/18128
SOP. SP 150	2/4939	2/18129
SOP. SP 200	2/4733	2/18130
SOP. SP 300	2/4734	2/18131
SOP. SP 400	2/1036	2/18132
SOP. SP 500	2/1037	2/18666
SOP. SP 600	2/4938	2/18667
R450	2/7325	-



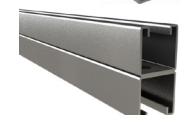
DESCRIPCIÓN	PG	GC	i304
PS	REF.	REF.	REF.
PS 35	2/3476	2/3479	2/11227
PS 60	2/2066	2/3480	2/3645
PS 80	2/3477	2/3481	2/11228
PS 100	2/3478	2/3482	2/5138



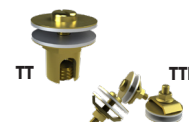
DESCRIPCIÓN	i304	i316
CFBFR	REF.	REF.
CFBFR41	2/10284	2/18567



DESCRIPCIÓN	PG	GC	i304
UNICANAL	REF.	REF.	REF.
41x21 Cal.16	2/6366	-	-
41x21 Cal.12	2/0235	2/0236	-
41x41 Cal.16	2/6365	-	2/18079
41x41 Cal.14	2/5500	-	2/18080
41x41 Cal.12	2/0233	2/0234	-
82x41 Cal.14	-		2/18081
82x41 Cal.12	-	2/5573	2/18080



DESCRIPCIÓN	LTN.
BORNAS TOMA TIERRA	REF.
BORNA TT 35 M6X12	2/6796
BORNA TTL 10-35mm² M6X25	2/8189



**TR ZMX 3.1/4-144 8A AL**



L = 12 pies (3.66m)

DESCRIPCIÓN	PASO 6	PASO 9	PASO 12
	Referencia	Referencia	Referencia
TR ZMX 4.3.1/4-144 8A AL	2/7533	2/7543	2/8235
TR ZMX 6.3.1/4-144 8A AL	2/7534	2/7544	2/8236
TR ZMX 9.3.1/4-144 8A AL	2/7535	2/7545	2/8237
TR ZMX 12.3.1/4-144 8A AL	2/7536	2/7546	2/8238
TR ZMX 16.3.1/4-144 8A AL	2/7537	2/7547	2/8239
TR ZMX 18.3.1/4-144 8A AL	2/7538	2/7548	2/8240
TR ZMX 20.3.1/4-144 8A AL	2/7539	2/7549	2/8241
TR ZMX 24.3.1/4-144 8A AL	2/7540	2/7550	2/8242
TR ZMX 30.3.1/4-144 8A AL	2/7541	2/7551	2/8243
TR ZMX 36.3.1/4-144 8A AL	2/7542	2/7552	2/8244

**ACCESORIOS**

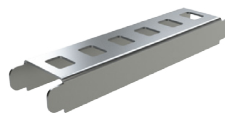
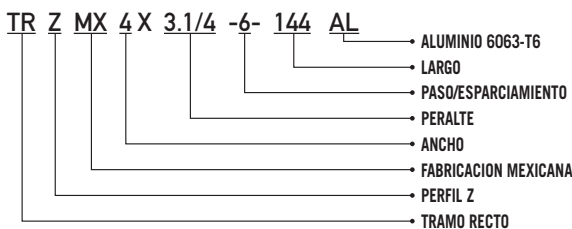


A	P	R	CURVA PLANA	VERTICAL EXTERIOR	VERTICAL INTERIOR	TE	CRUZ
pulgadas	pulgadas	pulgadas	Referencia	Referencia	Referencia	Referencia	Referencia
4	3.1/4	8	2/7583	2/7623	2/7663	2/7703	2/7743
6	3.1/4	8	2/7584	2/7624	2/7664	2/7704	2/7744
9	3.1/4	8	2/7585	2/7625	2/7665	2/7705	2/7745
12	3.1/4	8	2/7586	2/7626	2/7666	2/7706	2/7746
16	3.1/4	8	2/7587	2/7627	2/7667	2/7707	2/7747
18	3.1/4	8	2/7588	2/7628	2/7668	2/7708	2/7748
20	3.1/4	8	2/7589	2/7629	2/7669	2/7709	2/7749
24	3.1/4	8	2/7590	2/7630	2/7670	2/7710	2/7750
30	3.1/4	8	2/7591	2/7631	2/7671	2/7711	2/7751
36	3.1/4	8	2/7592	2/7632	2/7672	2/7712	2/7752



DESCRIPCIÓN	TORNILLERÍA / UNIONES
	Referencia
JU ZMX 3.1/4 PLANA AL	2/7783
JU ZMX 3.1/4 ZETA AL	2/7787
CLEMA 6/8	2/4289
PACK 100 CONJUNTO B2 M8X15 Cincado	2/4926

**TR ZMX 4X3.1/4-6-144 AL**



DESCRIPCIÓN	ITEMS
	Referencia
MONTANTE 3.1/4-P6-144	1/0344
MONTANTE 3.1/4-P9-144	1/0345
MONTANTE 3.1/4-P12-144	1/0346
TRAVESANO 4"X1,5 (U40X22)	1/2611
TRAVESANO 6"X1,5 (U40X22)	1/2612
TRAVESANO 9"X1,5 (U40X22)	1/2613
TRAVESANO 12"X1,5 (U40X22)	1/2614
TRAVESANO 16"X1,5 (U40X22)	1/2617
TRAVESANO 18"X1,5 (U40X22)	1/2615
TRAVESANO 20"X1,5 (U40X22)	1/2618
TRAVESANO 24"X1,5 (U40X22)	1/2616
TRAVESANO 30"X1,5 (U40X22)	1/2619
TRAVESANO 36"X1,5 (U40X22)	1/2620

\*Trabajamos todos los peraltes 3.1/4", 4", 4.1/2", 5" y 6"

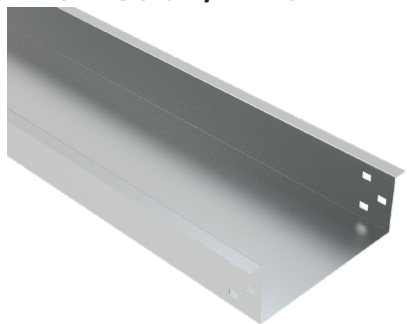
**TR CHFSP 3.1/4-120 AL**



L = 10 pies (3.05m)

DESCRIPCIÓN	CALIBRE 14	CALIBRE 16
	Referencia	Referencia
TR CHFSP 4X3.1/4-120 AL	6/0177	6/0167
TR CHFSP 6X3.1/4-120 AL	6/0178	6/0168
TR CHFSP 9X3.1/4-120 AL	6/0179	6/0169
TR CHFSP 12X3.1/4-120 AL	6/0180	6/0170
TR CHFSP 16X3.1/4-120 AL	6/0181	6/0171
TR CHFSP 18X3.1/4-120 AL	6/0182	6/0172
TR CHFSP 20X3.1/4-120 AL	6/0183	6/0173
TR CHFSP 24X3.1/4-120 AL	6/0184	6/0174
TR CHFSP 30X3.1/4-120 AL	6/0185	6/0175
TR CHFSP 36X3.1/4-120 AL	6/0186	6/0176

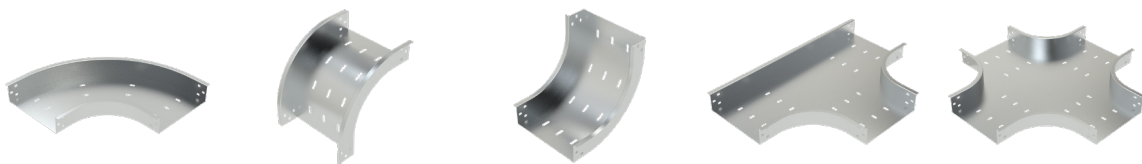
**TR CHFSC 3.1/4-120 AL**



L = 10 pies (3.05m)

DESCRIPCIÓN	CALIBRE 14	CALIBRE 16
	Referencia	Referencia
TR CHFSC 4X3.1/4-120 AL	6/0232	6/0142
TR CHFSC 6X3.1/4-120 AL	6/0233	6/0143
TR CHFSC 9X3.1/4-120 AL	6/0234	6/0144
TR CHFSC 12X3.1/4-120 AL	6/0235	6/0145
TR CHFSC 16X3.1/4-120 AL	6/0236	6/0146
TR CHFSC 18X3.1/4-120 AL	6/0237	6/0227
TR CHFSC 20X3.1/4-120 AL	6/0238	6/0228
TR CHFSC 24X3.1/4-120 AL	6/0239	6/0229
TR CHFSC 30X3.1/4-120 AL	6/0240	6/0230
TR CHFSC 36X3.1/4-120 AL	6/0241	6/0231

**ACCESORIOS**



A	P	R	CURVA PLANA	VERTICAL EXTERIOR	VERTICAL INTERIOR	TE	CRUZ
pulgadas	pulgadas	pulgadas	Referencia	Referencia	Referencia	Referencia	Referencia
4	3.1/4	8	6/5881	6/6281	6/6081	6/7181	6/7381
6	3.1/4	8	6/5882	6/6282	6/6082	6/7182	6/7382
9	3.1/4	8	6/5883	6/6283	6/6083	6/7183	6/7383
12	3.1/4	8	6/5884	6/6284	6/6084	6/7184	6/7384
16	3.1/4	8	6/5885	6/6285	6/6085	6/7185	6/7385
18	3.1/4	8	6/5886	6/6286	6/6086	6/7186	6/7386
20	3.1/4	8	6/5887	6/6287	6/6087	6/7187	6/7387
24	3.1/4	8	6/5888	6/6288	6/6088	6/7188	6/7388
30	3.1/4	8	6/5889	6/6289	6/6089	6/7189	6/7389
36	3.1/4	8	6/5890	6/6290	6/6090	6/7190	6/7390



\*Trabajamos todos los peraltes 3.1/4", 4", 4.1/2", 5" y 6"

**DESCRIPCIÓN**

JU ZMX 3.1/4 PLANA AL  
 JU ZMX 3.1/4 ZETA AL  
 PACK 100 CONJUNTO B2 M8X15 Cincado

**TORNILLERÍA / UNIONES**

**Referencia**

2/7783  
 2/7787  
 2/4926

## BASORPLAST BPE PERFORADA



DESCRIPCIÓN	TRAMO RECTO	TAPA
	Referencia	Referencia
BPE 60X100	2/10070	2/10078
BPE 60X150	2/10071	2/10079
BPE 60X200	2/10072	2/10080
BPE 60X300	2/10073	2/10081
BPE 100X200	2/10074	2/10080
BPE 100X300	2/10075	2/10081
BPE 100X400	2/10076	2/10082
BPE 100X600	2/10077	2/10083



## BASORPLAST BPE CIEGA



DESCRIPCIÓN	TRAMO RECTO	TAPA
	Referencia	Referencia
BPE-C 60X100	2/10062	2/10078
BPE-C 60X150	2/10063	2/10079
BPE-C 60X200	2/10064	2/10080
BPE-C 60X300	2/10065	2/10081
BPE-C 100X200	2/10066	2/10080
BPE-C 100X300	2/10067	2/10081
BPE-C 100X400	2/10068	2/10082
BPE-C 100X600	2/10069	2/10083

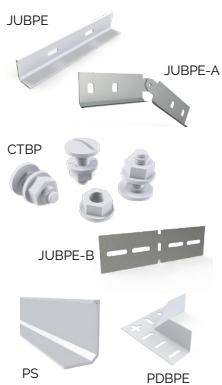


## ACCESORIOS



		CURVA PLANA	TAPA	CURVA EXTERIOR	TAPA	CURVA INTERIOR	TAPA	TAPA (final)
A	P	Ref.	Ref.	Ref.	Ref.	Ref.	Ref.	Ref.
60	100	2/10089	2/10097	2/10119	2/10127	2/10103	2/10111	2/10136
60	150	2/10090	2/10098	2/10120	2/10128	2/10104	2/10112	2/10137
60	200	2/10091	2/10099	2/10121	2/10129	2/10105	2/10113	2/10138
60	300	2/10092	2/10100	2/10122	2/10130	2/10106	2/10114	2/10139
100	200	2/10093	2/10099	2/10123	2/10131	2/10107	2/10115	2/10140
100	300	2/10094	2/10100	2/10124	2/10132	2/10108	2/10116	2/10141
100	400	2/10095	2/10101	2/10125	2/10133	2/10109	2/10117	2/10142
100	600	2/10096	2/10102	2/10126	2/10134	2/10110	2/10118	2/10143

## UNIONES



DESCRIPCIÓN	PVC/1304
UNIONES	REF.
JUBPE H60	2/10084
JUBPE H100	2/10085
CTBP-100	2/10017
JUBPE-A 60	2/5036
JUBPE-A 100	2/5037
JUBPE-B 60	2/3520
JUBPE-B 60	2/5038
PSBPE 60	2/10144
PSBPE 100	2/10145
PDBPE 60/100	2/10135

## SOPORTES



DESCRIPCIÓN	SHG	SVG
SOPORTES PVCMI UV	REF.	REF.
100	2/10011	2/10050
150	2/10012	2/10051
200	2/10013	2/10052
300	2/10014	2/10053
400	2/10015	2/10054
600	2/10016	2/10055

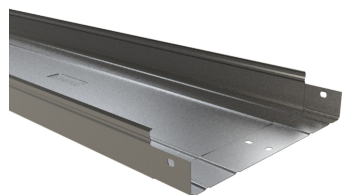


## TR BP NRE (80MM)



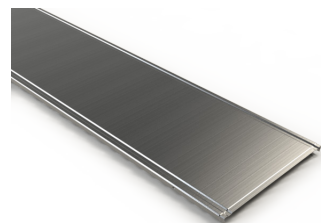
DESCRIPCIÓN	PRE GALVANIZADO	CALIENTE	INOX 304	INOX 316
	Referencia	Referencia	Referencia	Referencia
NRE-P 100X80X0.7	2/17809	2/1235	2/17830	2/18140
NRE-P 150X80X0.7	2/17810	2/1236	2/17831	2/18141
NRE-P 200X80X0.8	2/17811	2/1237	2/17832	2/18142
NRE-P 300X80X1	2/8763	2/10033	2/17833	2/18143
NRE-P 400X80X1	2/8764	2/10034	2/17834	2/18144
NRE-P 500X80X1	2/8765	2/10035	2/17835	2/18145
NRE-P 600X80X1	2/8766	2/10036	2/17836	2/18146

## TR BC NRE (80MM)



DESCRIPCIÓN	PRE GALVANIZADO	CALIENTE	INOX 304	INOX 316
	Referencia	Referencia	Referencia	Referencia
NRE 100X80X0.7	2/17812	2/1295	2/17837	2/18147
NRE 150X80X0.7	2/17813	2/1296	2/17838	2/18148
NRE 200X80X0.8	2/17814	2/1297	2/17839	2/18149
NRE 300X80X1	2/8773	2/10037	2/17840	2/18150
NRE 400X80X1	2/8774	2/10038	2/17841	2/18151
NRE 500X80X1	2/8775	2/10039	2/17842	2/18152
NRE 600X80X1	2/8776	2/10040	2/17843	2/18153

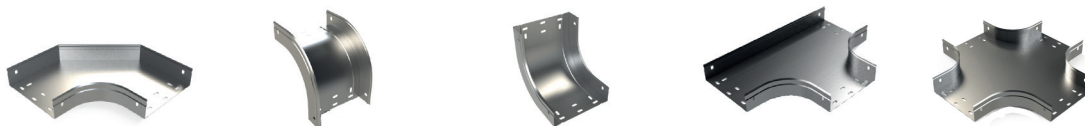
## TAPA BANDEJA NRE



DESCRIPCIÓN	PRE GALVANIZADO	CALIENTE	INOX 304
	Referencia	Referencia	Referencia
TERE 100	2/1312	2/1321	2/4560
TERE 150	2/1313	2/1322	2/5123
TERE 200	2/1314	2/1323	2/4561
TERE 300	2/1316	2/1325	2/4716
TERE 400 2M	2/1317	2/1326	2/4931
TERE 500 2M	2/1318	2/1327	2/4562
TERE 600 2M	2/1319	2/1328	2/5357

## ACCESORIOS PRE-GALVANIZADOS

\*También disp. en caliente e inox



A	B	CURVA PLANA	VERTICAL EXTERIOR	VERTICAL INTERIOR	TE	CRUZ
MM	MM	Referencia	Referencia	Referencia	Referencia	Referencia
80	100	2/1352	2/1580	2/1466	2/1766	2/1881
80	150	2/1353	2/1581	2/1467	2/1767	2/1882
80	200	2/1354	2/1582	2/1468	2/1768	2/1883
80	300	2/1356	2/1584	2/1470	2/1770	2/1885
80	400	2/1357	2/1585	2/1471	2/1771	2/1886
80	500	2/1358	2/1586	2/1472	2/1772	2/1887
80	600	2/1359	2/1587	2/1473	2/1773	2/1880



DESCRIPCIÓN	TORNILLERÍA
	Referencia
PACK 100 CONJUNTO B1 M6X14 Cincado	2/4356
PACK 100 CONJUNTO B1 M6X14 Caliente	2/6826
PACK 100 CONJUNTO B1 M6X14 INOX	2/4925

**50**  
1968-2018  
YEARS/AÑOS

**BASOR MÉXICO SAPI DE CV**  
Carretera México-Cuautitlán km 31.5  
Bodega 33, Loma Bonita, 54879 Cuautitlán,  
Estado de México  
atencionmx@basor.com

**BE Basor**  
C A B L E T R A Y S P E C I A L I S T



**Basor Electric S.A**  
Avenida Alcodar 45-47  
Gandia (Valencia)  
Tel.96.287.6695



**LinkedIn**  
Basor Electric S.A



**Twitter**  
@Basorelectric



**Youtube**  
youtube.com/user/  
basorelectric



**Web**  
www.basor.com