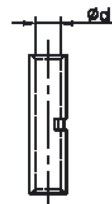
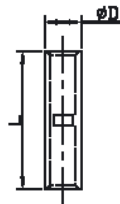


L BUTT CONNECTORS L 中间套管 UL:E357535



- Material
- Terminal Body: Copper
- Plating: Tin

PART NO	ITEM NO	DIMENSIONS		
		φ D	φ d	L
LY0017-0001	L1.5	3.7	1.8	20.0
LY0017-0002	L2.5	4.0	2.4	20.0
LY0017-0003	L4	4.8	3.1	20.0
LY0017-0004	L6	5.5	3.8	20.0
LY0017-0005	L10	6.2	4.5	20.0
LY0017-0006	L16	7.1	5.4	40.0
LY0017-0007	L25	8.8	6.8	45.0
LY0017-0008	L35	10.6	8.2	45.0
LY0017-0009	L50	12.4	9.5	45.0
LY0017-0010	L70	14.7	11.2	50.0
LY0017-0011	L95	17.4	13.5	50.0
LY0017-0012	L120	19.4	15.0	55.0
LY0017-0013	L150	21.2	16.5	60.0
LY0017-0014	L185	23.5	18.5	65.0
LY0017-0015	L240	26.5	21.0	80.0
LY0017-0016	L300	30.0	23.5	85.0
LY0017-0017	L400	36.5	28.5	90.0
LY0017-0018	L500	39.0	30.0	100.0
LY0017-0019	L550	41.4	31.7	100.0
LY0017-0020	L630	45.0	35.0	110.0
LY0017-0021	L800	50.6	39.0	150.0
LY0017-0022	L1000	56.2	43.0	170.0
LY0017-0023	A-L1.5	3.6	1.8	20.0
LY0017-0024	A-L2.5	3.9	2.4	20.0
LY0017-0025	A-L4	4.7	3.1	20.0
LY0017-0026	A-L6	5.4	3.8	20.0
LY0017-0027	A-L10	6.1	4.5	20.0
LY0017-0028	A-L16	7.0	5.4	40.0
LY0017-0029	A-L25	8.6	6.8	45.0
LY0017-0030	A-L35	10.4	8.2	45.0
LY0017-0031	A-L50	12.2	9.5	45.0
LY0017-0032	A-L70	14.4	11.2	50.0
LY0017-0033	A-L95	17.1	13.5	50.0
LY0017-0034	A-L120	19.0	15.0	55.0
LY0017-0035	A-L150	20.8	16.5	60.0
LY0017-0036	A-L185	23.1	18.5	65.0
LY0017-0037	A-L240	26.0	21.0	80.0
LY0017-0038	A-L300	29.4	23.5	85.0
LY0017-0039	A-L400	35.8	28.5	90.0
LY0017-0040	A-L500	38.2	30.0	100.0

PART NO	ITEM NO	DIMENSIONS		
		φ D	φ d	L
LY0017-0041	A-L630	44.1	35.0	110.0
LY0017-0042	B-L1.5	3.4	1.8	20.0
LY0017-0043	B-L2.5	3.7	2.4	20.0
LY0017-0044	B-L4	4.5	3.1	20.0
LY0017-0045	B-L6	5.2	3.8	20.0
LY0017-0046	B-L10	5.9	4.5	20.0
LY0017-0047	B-L16	6.8	5.4	40.0
LY0017-0048	B-L25	8.4	6.8	45.0
LY0017-0049	B-L35	10.2	8.2	45.0
LY0017-0050	B-L50	11.9	9.5	45.0
LY0017-0051	B-L70	14.1	11.2	50.0
LY0017-0052	B-L95	16.7	13.5	50.0
LY0017-0053	B-L120	18.6	15.0	55.0
LY0017-0054	B-L150	20.4	16.5	60.0
LY0017-0055	B-L185	22.6	18.5	65.0
LY0017-0056	B-L240	25.5	21.0	80.0
LY0017-0057	B-L300	28.8	23.5	85.0
LY0017-0058	B-L400	35.1	28.5	90.0
LY0017-0059	B-L500	37.4	30.0	100.0
LY0017-0060	B-L630	43.2	35.0	110.0
LY0017-0061	C-L1.5	3.3	1.8	20.0
LY0017-0062	C-L2.5	3.6	2.4	20.0
LY0017-0063	C-L4	4.4	3.1	20.0
LY0017-0064	C-L6	5.1	3.8	20.0
LY0017-0065	C-L10	5.8	4.5	20.0
LY0017-0066	C-L16	6.6	5.4	40.0
LY0017-0067	C-L25	8.3	6.8	45.0
LY0017-0068	C-L35	10.0	8.2	45.0
LY0017-0069	C-L50	11.6	9.5	45.0
LY0017-0070	C-L70	13.8	11.2	50.0
LY0017-0071	C-L95	16.4	13.5	50.0
LY0017-0072	C-L120	18.2	15.0	55.0
LY0017-0073	C-L150	19.9	16.5	60.0
LY0017-0074	C-L185	22.1	18.5	65.0
LY0017-0075	C-L240	25.0	21.0	80.0
LY0017-0076	C-L300	28.2	23.5	85.0
LY0017-0077	C-L400	34.3	28.5	90.0
LY0017-0078	C-L500	36.5	30.0	100.0
LY0017-0079	C-L630	42.2	35.0	110.0